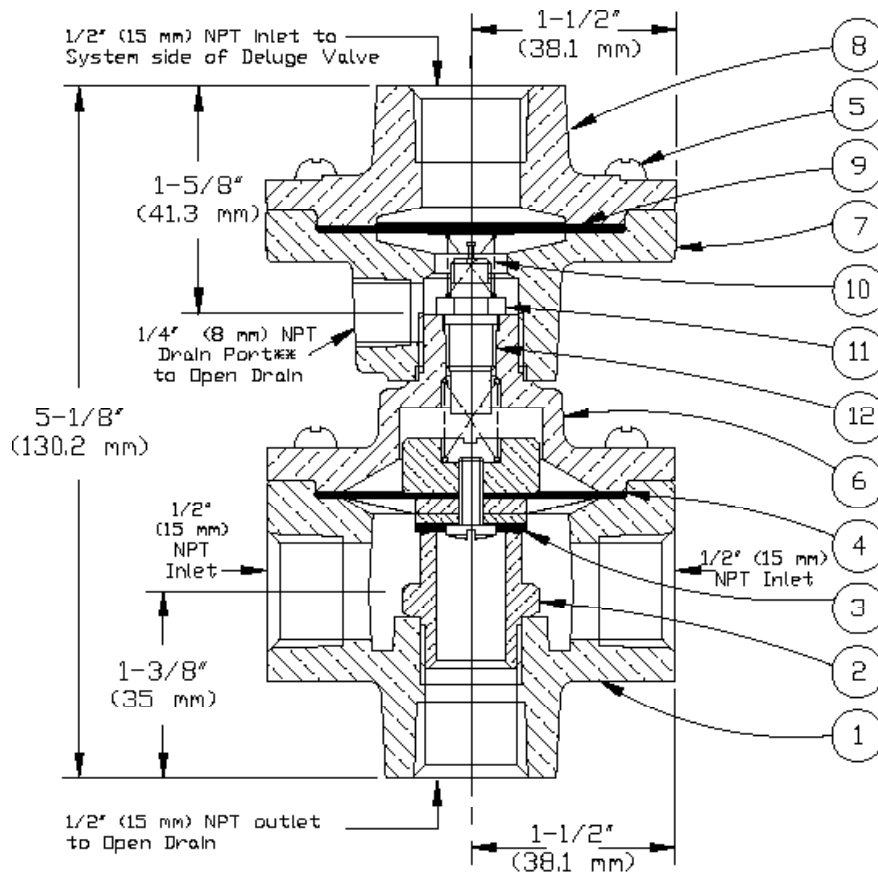




REPLACEMENT PARTS

**PRESSURE OPERATED
RELIEF VALVE (PORV)
MODEL C-1**

Manufactured 1966 -



** Orientation of 1/4" outlet axis may vary relative to axis of 1/2" Inlet ports.

ITEM NO.	PART NUMBER	DESCRIPTION	MATERIAL	NO. REQ'D
1	--	Body	Brass	1
2	01468A	Seat	Brass	1
3	*	Diaphragm Assembly	Various	1
4	01604A	Seal Ring	Nylon Reinforced Neoprene	1
5	04505A	Screw, R.H., #10-24 x 5/8 (15,9 mm)	Stainless Steel	12
6	--	Cover	Brass	1
7	--	Base	Brass	1
8	--	End Cover	Brass	1
9	01792A	Diaphragm	Neoprene	1
10	04137A	Spring	Stainless Steel	1
11	06418A	Schrader Valve Assembly†	Brass and Stainless Steel	1
12	06177A	Clapper Spring	Stainless Steel	1

--Indicates replacement part not available.

* Indicates replacement part only available in a Sub-Assembly listed below.

† Schrader Valve Assembly replacement not available for the Model C-1 PORV manufactured prior to 1989.

SUB-ASSEMBLY

3-5, 9-12	12611	Maintenance Kit†		
-----------	-------	------------------	--	--